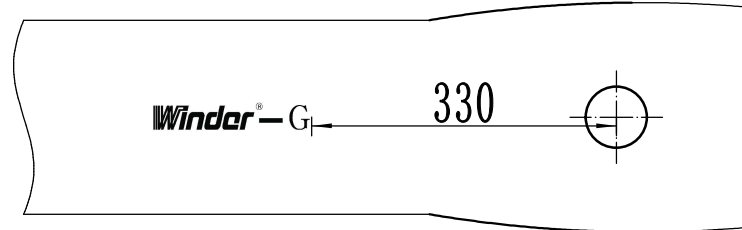
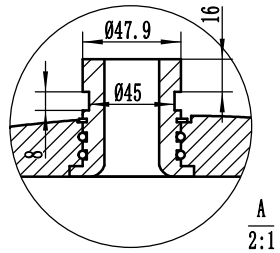
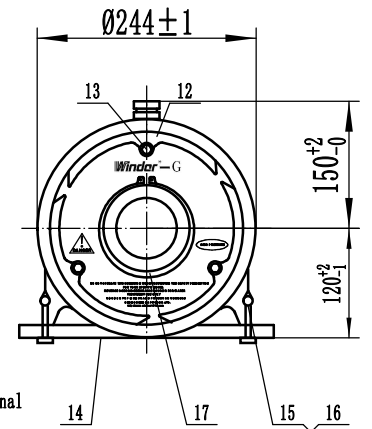


警告!
 淡水出口内部压力必须不超过120PSI (0.84Mpa)
 淡水出口水口F—1"NPT内螺纹
 Internal pressure must not exceed 120PSI (0.84Mpa)
 Fresh water outlet
 F—NPT 1" internal thread



- 设计压力2.1MPa(300PSI)
Design Pressure 2.1MPa(300PSI)
- 设计温度66℃ (150° F)
Design Temperature 66℃ (150° F)
- 最低允许温度-10℃ (14° F)
Min Temperature -10℃ (14° F)
- 工作介质为PH3-10的水
Media:Water PH3-10
- 项目10仅在原水端; 项目5仅在浓水端;
Item 10 is at the RAW end only; item 5 is at the concentrated end only; item 3 is at the conventional 1.5 inch.
- 请按照说明书正确使用
Please operate it according to operation manual

长度编码 Length	S (mm)	L (mm)	P (mm)	重量 WEIGHT (kg)				
1	715	1435	1120	30	17	卡簧 PERMEATE RETAINING RING	2	SUS304
2	1731	2453	2136	37	15/16	钢带STRAP+螺丝SCREWHEAD (螺栓尺寸: M8*90)	2-3	A-666, 304+A216
3	2747	3469	3152	44	14	鞍座SADDLE (3芯以上均为3个)	2-3	TPU(S60D)
4	3763	4485	4168	51	13	挡块螺丝 BAFFLE FIXING BOLTS	6	SUS304
5	4779	5501	5184	58	12	挡块 LINK STOPPER	6	铝合金
6	5795	6517	6200	65	11	承压头 (300Psi) HEAD SEAL	2	ABS
7	6811	7533	7216	72	10	适配器 ADAPTOR	2	ABS
					08/09	适配器大/小O型圈 ADAPTOR LARGE/SMALL O GLUE	4+4	EPDM512+硅胶
					07	π型密封胶圈 π SEALING RUBBER RING	2	硅胶
					06	承载板 BEARING PLATE	2	铸铝
					05	止推环 THRUST CONE	1	工程塑料 Engineering Plastic
					04	侧口两圈 SIDE DORT	2	SUS304
					03	侧口 SIDE PORT	2	SUS304
					02	侧口密封圈 SIDE PORT SEAL RING	4	EPDM 512
					01	壳体 SHELL	1	FIBER GLASS +EPOXY
						名称	数量	材料

	NAME	DATE	Winder-G 河北成达水处理科技有限公司 Hebei Chengda Water Technology Co., Ltd	
设计	户景伟	2022.3.12	型号 TYPE	单位 UNIT:
审核			80S300	MM
审批			仅供参考, 零部件以图纸为准, 变更不另行通知	
THIS DRAWING CAN NOT BE USED WITHOUT PRIOR WRITTEN APPROVAL OF OUR COMPANY				